



ELECTRICAL SAFETY & MAINTENANCE

At ERMCO, we work with you to understand your electrical, systems and automation needs. We develop innovative solutions that enable efficient design, installation, integration and management of your power, systems and controls resources.

Since 1962, ERMCO has grown from a small electrical maintenance company into a top national electrical contractor and a leader in our industry. As an employee-owned company, every employee is personally invested in making sure the company succeeds and we do that by making sure our clients and partners succeed.



GET THE MOST OUT OF YOUR ELECTRICAL EQUIPMENT

Just like your mechanical equipment, your electrical equipment performs better and lasts longer when regularly inspected and maintained. Preventing potential issues before they occur means you avoid an overheated electrical system or a catastrophic failure and the associated costs and damages.

A preventative maintenance plan for your electrical equipment allows you to:

- Reduce potential for personal injury and damage to buildings and equipment
- Minimize energy costs by making sure equipment is performing at peak efficiency
- Lower the cost of ongoing equipment repair and replacement
- Avoid unplanned downtime due to electrical outages
- Avoid costs of temporary repairs until full repairs can be completed

NFPA 70 ON ELECTRICAL SAFETY & MAINTENANCE

The National Electrical Code (NEC), or NFPA 70, provides the benchmark for safe electrical design, installation, and inspection to protect people and property from electrical hazards.

NFPA 70B, Recommended Practice for Electrical Equipment Maintenance, notes that: "A well-administered Electrical Preventative Maintenance program will reduce accidents, save lives, and minimize costly break downs and unplanned shutdowns of production equipment."

HOW ERMCO CAN HELP

ERMCO's skilled technicians, certified through NICET, provide services including acceptance and maintenance testing for all voltage classes. All testing is performed according to the NETA (International Electrical Testing Association) Acceptance Testing and Maintenance Testing Specifications and to the appropriate ANSI and IEEE testing standards.

- Arc-Flash hazard analysis
- Infrared inspections
- Employee safety training assistance
- Cable installation, splicing, terminating, and testing
- Circuit breaker testing, rebuild and repair
- Short circuit and coordination studies
- Substation installation and repair
- Transformers, dry type and liquid-filled

WOULD YOU LIKE TO KNOW MORE?

For more information on how ERMCO can help with your testing and maintenance, contact:

DAVID CARTER

317.423.2213

dcarter@ermco.com

INFRARED INSPECTIONS

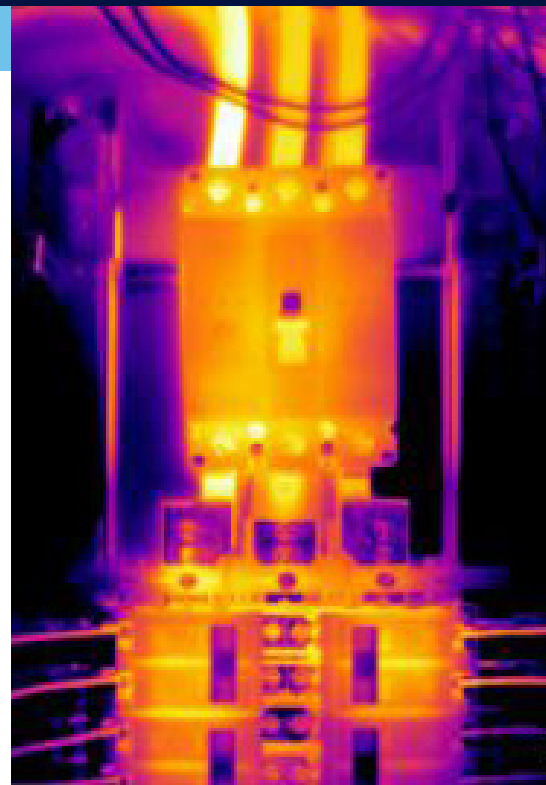
Before an electrical component burns up, it heats up.

Infrared thermography is used to detect the excessive heat produced by a damaged or failing component. This allows problems to be identified and addressed before the component fails; preventing equipment damage, safety hazards and production downtime.

As part of an Electrical Preventative Maintenance program, infrared inspections also save money by verifying equipment is operating at peak efficiency.

Infrared inspections can be performed on electrical equipment, including:

- Electrical distribution equipment
- Generator systems
- Main switchgear equipment
- Motor control centers
- Transformers
- Electrical motors
- High value electronics
- Circuit breakers
- Fuses
- Bus ducts



ARC FLASH HAZARD ANALYSIS

An Arc Flash is any event in your electrical system that generates an unwanted and unexpected release of energy. This arc flash can severely injure employees, cause significant damage to equipment and loss of revenue.

OSHA requires an assessment of all hazards when working on energized electrical equipment and that proper personal protective equipment is provided.

Arc Flash Hazard Analysis calculates the incident energy generated during an electrical arc event using the magnitude and potential time duration of these events at various electrical devices in your system. What you learn from the analysis can assist in addressing worker safety and OSHA compliance, decrease the risk of liability due to electrical accidents, and increase the availability of building insurance.

ERMCO's Arc Flash Hazard Analysis services are provided by our experienced in-house team of certified electricians. All testing is performed according to the International Electrical Testing Association (NETA) Acceptance and Maintenance Testing Specifications and to the appropriate ANSI and IEEE testing standards.